



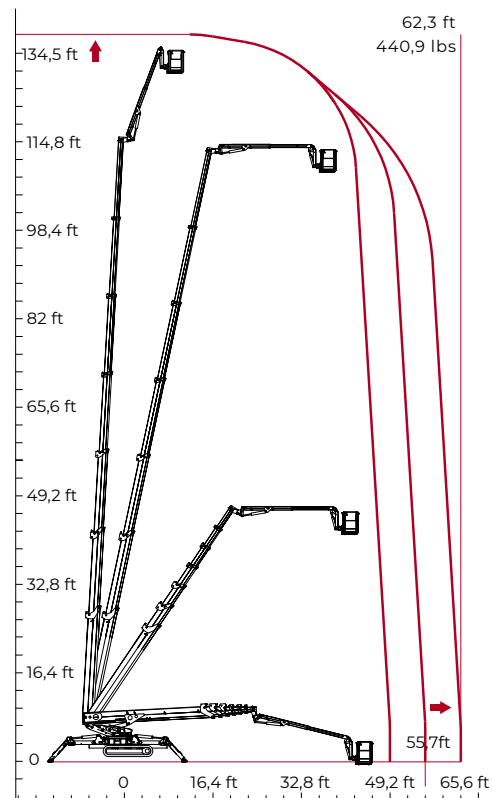
TECHNICAL SHEET

PERFORMANCE AND DIMENSIONS

Main features

No one is in its league. With its telescopic boom with 6 extensions, plus the articulated telescopic jib, the CMC 135XL is capable of reaching the extraordinary working height of 131,2 ft above the ground and the lateral outreach up to 62,3 ft with a unique payload of 440,9 lbs.

Max. working height	135,5 ft
Max. outreach with 440,9 lbs	62,3 ft
Platform height	127,9 ft
Max. load in basket	440,9 lbs
Basket dimensions	6,56 x 2,62 x 3,6 ft
Basket rotation	+90°
Turret rotation	+/- 180° (360° continuous)
Total weight	29674,2 lbs



Via Bitritto, 119 - 70124 BARI - ITALY
Tel. +39 080 532 66 06 - Fax +39 080 536 85 41
www.cmclift.com - info@cmclift.com



